

# Friends of the South Slopes

August 2020



Wildflowers on upper Lost Lake Trail

Box 28011 RPO East Kelowna, Kelowna BC V1W 4A6 <http://www.foss-kelowna.org> [info@foss-kelowna.org](mailto:info@foss-kelowna.org)

## FOSS MEETING WITH BC PARKS' PERSONNEL

Members of the FOSS Board of Directors were fortunate to spend much of a day recently with Jonathan Finlay, Area Supervisor East Okanagan, and Geoff Popowich, East Okanagan Senior Park Ranger. Jonathan and Geoff, a sincere thank you for including us in your busy schedules. FOSS recognizes and appreciates the work you are doing in the vast area you oversee.

This meeting with BC Parks gave FOSS an opportunity to learn about proposals and projects 'in the works' for both Myra-Bellevue and Okanagan Mountain Provincial Parks, to share FOSS' observations and interests, and to report on all the trail maintenance work that FOSS has undertaken. Following the meeting at the Stewart Rd. East Trailhead, MBPP, Jonathan and Geoff participated in a Park inspection via UTV. They spoke highly of the offers and services that FOSS provides and stated that Parks is very lucky to have FOSS as a partner.

Highlights from the discussions include:

### **Myra-Bellevue Provincial Park:**

**Life and Safety:** Jonathan and Geoff were taken to the area FOSS is proposing for the establishment of a heli-pad which is easily accessed off Bellevue Access Trail. Recent helicopter rescues have deemed this a FOSS priority. FOSS has permission to move forward with this project, working together with Central Okanagan Search and Rescue (COSAR).

**Bellevue Access/Priest Creek Crossing:** FOSS will put together some proposals re: our ideas for addressing the eroded Creek crossing, and further discussion will be required.

**Myra Wetlands:** When this beautiful, unique wetland is sufficiently reclaimed, FOSS is hoping that it will become an interpretive showcase. Because its proximity is easily accessible it would be a wonderful educational resource for both school children and other Park visitors.

**Stewart Road East Access and Parking Lot:** A feasibility study has been initiated to assist in determining the best approach in improving this important Myra-Bellevue Park entrance. Access for those with disabilities will be included in the review.

**Trail Signage:** It is recognized that many signs in Myra-Bellevue are in need of repair. FOSS maintenance volunteers will begin addressing a list of priorities in the near future.



## Okanagan Mountain Provincial Park:

FOSS explained to Jonathan and Geoff that we have received numerous requests to attempt to clear **Wildhorse Canyon**, a long and difficult trail, which is currently overgrown with Saskatoon bushes, thorns, trees and branches. It is of significant historic value and is also one of the best hikes in the region and is often used by school groups. BC Parks has asked that FOSS prepare a detailed proposal for re-establishing access to the Golden Mile Trail off Lakeshore Road. Improved access will enable FOSS to proceed with trail maintenance on the northern portion of the Wildhorse Canyon Trail. It is hoped that interested businesses and groups in the south (ie. in Chute Lake and Naramata) can be encouraged to participate in the future so that the entire length of trail can be brushed/maintained.

**August, 2003**  
**OMPP on fire, viewed**  
**from West Kelowna**



## KLO Creek Regional Park - Signage & Trash

KLO Creek Trail is getting significant usage! The parking area on McCulloch Rd. by the KLO Creek Bridge is often full, with parking spilling over alongside the roadside.

The Regional District of Central Okanagan recently installed an information sign and a bear-proof trash container at the entrance to the trail. Both are very much appreciated!!! Now you can practice respectful trail etiquette by packing in-packing out your trash and depositing it in the container.



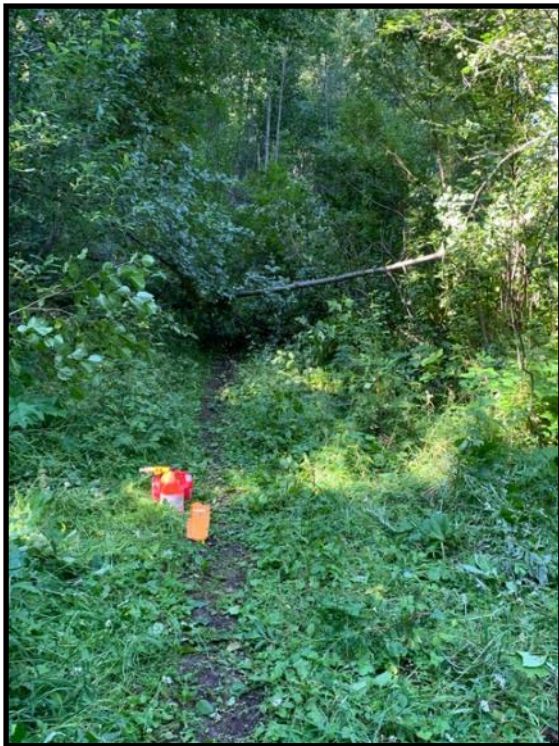


## Trail Maintenance Report:

Thank you again to Herb, our 'trail boss', and the FOSS 'gang' who have spent so many hours dedicated to trail improvements. Due to their efforts we now have over 20 kilometers of trail fully brushed.

During the extreme heat and fire rating all work in the Parks was stopped, especially when using motorized equipment. Crews, using hand tools, did manage to complete work on Bellevue Access.

FOSS' new UTV has now been outfitted and has joined our other one to support work on the trails. A second trimmer has also be added to our inventory of tools.



← Before & After →

Bellevue  
Access Trail,  
Myra-Bellevue  
Provincial  
Park



Piper's Trail—  
cleared!





## ***There's More to the KVR than the Myra Canyon Trestles!***

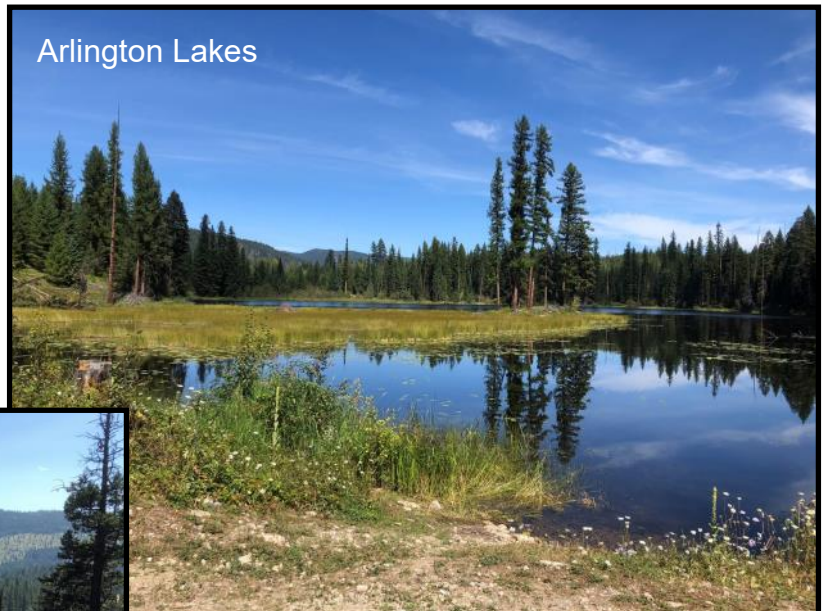
The spectacular Myra Canyon Trestle section of the Kettle Valley Rail Trail is truly a wonder! Be aware that the trail is often very crowded as locals and visitors cycle and hike to the majestic trestles and tunnels.

If you are looking for 'a road less travelled' you might want to try cycling other parts of the KVR that lie within the South Slopes. The photo to the right was taken on the KVR east of the Myra Canyon parking lot, en route to McCulloch Lake. This section of the KVR rail trail is not well maintained but it's doable with a mountain bike and good preparation. It's just over a one hour cycle from the parking area on Myra Forest Service Road to McCulloch Lake, a nice stopping point for a picnic before the return ride.



Another fine ride is from Arlington Lakes Forest Service campsite north towards McCulloch Lake. You can park in the 'day use' area at Arlington Lakes and cycle out and back. The day we cycled, we only encountered one other cyclist in the 2 1/2 hrs we were out! Be aware that there is no cell service along this section of the KVR and once again the trail is not maintained.

Arlington Lakes



Views west of Arlington Lakes

And then there's the cycle from Little White FSR to Bellevue Trestle—(photo on the right), more spectacular views! For all three of these adventures, you may be sharing the trail with motorized vehicles, ATV & dirt bikes as motorized recreation is permitted.



Bellevue Canyon, from the KVR