

Friends of the South Slopes

July 2020



Bellevue Creek Canyon from KVR

Box 28011 RPO East Kelowna, Kelowna BC V1W 4A6 <http://www.foss-kelowna.org> info@foss-kelowna.org

Update from FOSS' Trail Maintenance Coordinator:

FOSS MUST thank the guys and gals who have spent MANY hours (some of them in the pouring rain) dedicated to trail improvements in the Provincial Parks and the neighbouring Crown Lots and City Utility property. Also, there has been an influx of new recruits/volunteers and Herb will be organizing safety training sessions for all as soon as possible. Thank you all for your interest and enthusiasm!

FOSS would like to thank Alan Milnes, FOSS Board member, for creating the great signs for the City Utility Property, identifying some of the main trails that connect to Myra-Bellevue Provincial Park and KLO Creek Regional Park. The remaining trails in the area will be signed next year, following the fire mitigation work scheduled for this winter.

Due to our volunteer efforts to date, Lost Lake to Teddy Bear Junction, then Pink Highway almost to Obelisk, and Woolley's Revenge, are all brushed clear. Several reported tree blowdowns are now long gone! Windfall Trail brushing is in the works.



Brushing Woolley's Revenge, MBPP

.....Trail Report, continued:

BC Parks has removed the debris and abandoned vehicles found on the Outhouse Trail. Other debris in the area is being cleaned up as well – thank you, Geoff Popowich, East Okanagan Senior Park Ranger!

Thanks to a VERY generous donation from a 'FOSS Fan', FOSS will be purchasing another trimmer and a second UTV which will lead to even further trail improvements in the coming days. Herb is making changes to the racks on the UTVs that carry the necessary equipment and this will enhance the effectiveness and ease of use.

IMPORTANT!! If you see trail signs down, or wish to report other issues on the trails, please contact Herb directly: globalsafety@shaw.ca

Thank you again, everyone!!



The FOSS KMRA Committee (KLO Creek Myra Recreation Area) and FOSS President, Brad Wright, attended the recent public hearing regarding the application for zoning and OCP changes to the large piece of land extending across KLO Creek, which includes the Myra Canyon Adventure Park.

FOSS supports the desire/need for nature/wilderness-oriented economic development in this area and applauds the applicant for his innovation and creativity, such as providing the anticipated kids' camps, team-building activities and challenges such as a Via Ferrata. We trust that this can be a successful venture and we trust that they will be respectful of those who recreate on the Crown and City lands/trails (ie. the Get Back Trail) that are immediately adjacent to the property – the hikers, bikers and horseback riders. Related to this, the RDCO currently has a lease agreement with the property owners for the KLO Creek Corridor that allows public access from KLO Creek Regional Park to Myra-Bellevue Provincial Park/Angel Springs. We will all work with the property owners to achieve our common goals.

Permanent Closure of Horse Trail, MBPP

Two years ago, BC Parks permanently closed Horse Trail because of extreme erosion. Because the trail is a 'fall-line' trail, it was determined that there was not an opportunity to re-route it that would meet the BC Parks' trail standards.

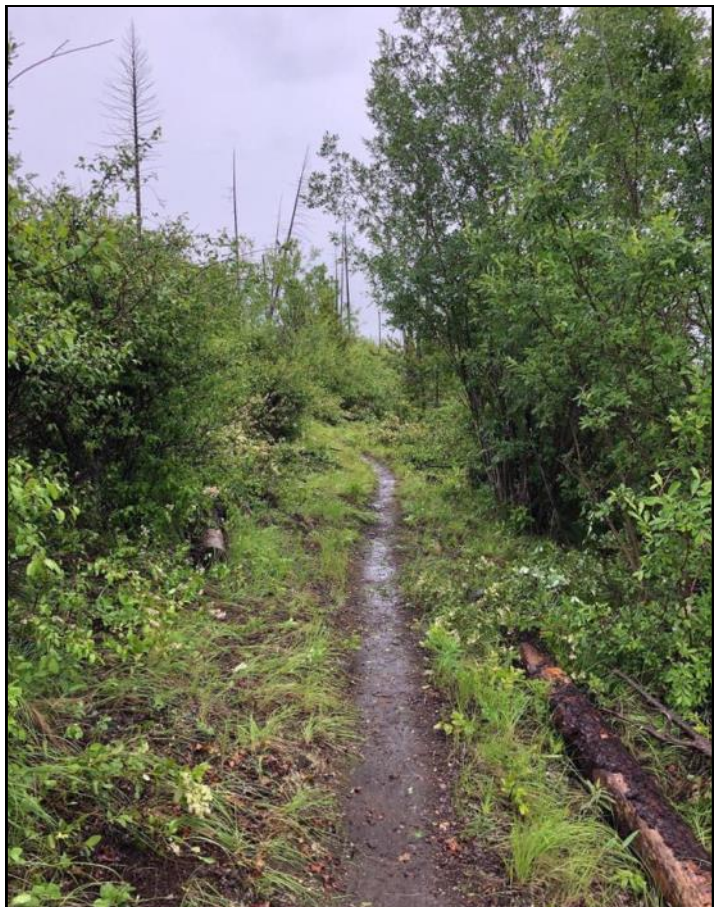
In June 2020, signage and a barrier were installed to clearly identify that the trail is closed.

Sean Kelly Law, the Adopt a Trail Sponsor of Horse Trail since 2012, is now sponsoring Fairlane Trail between Lost Lake Trail and Salamander Trail.



FOSS' Adopt a Trail Volunteers have been busy!

Here are some photos from one of MTBco's two trail maintenance work parties held so far this spring/summer on their adopted trail, Hillbilly. FOSS' UTV & equipment, including the power brusher, were put to good use by the volunteers. (Photos courtesy of MTBco)



Are you a FOSS Adopt a Trail Sponsor or have you adopted a trail through the 'Regular' Adopt a Trail Program? We would love to give you a shout out to recognize your trail maintenance days. Send us your photos and we may post them to FOSS' Facebook page or in the newsletter. Send your photos to FOSS' Adopt a Trail Program Manager, Penny Gubbels: pgubbels@telus.net

Myra Canyon Trestles Re-Opened

Effective June 27th, BC Parks reopened the Myra Canyon section of Myra-Bellevue Provincial Park. The trail reopened as part of Phase 3 of the Province's COVID-19 protocol and repairs and maintenance on the trail were undertaken during the closure.