

Friends of the South Slopes

October 2019



Box 28011 RPO East Kelowna, Kelowna BC V1W 4A6

<http://www.foss-kelowna.org>

info@foss-kelowna.org

FOSS Trail Maintenance Co-Ordinator

As reported to its membership by email on Oct. 12, 2019, FOSS' Board of Directors are very pleased to have contracted with Herb Blamire to monitor and facilitate trail maintenance projects in both Myra-Bellevue and Okanagan Mountain Provincial Parks. Herb is a former Director/President of FOSS — he first sat on the board in 2006. Herb has 45 years of experience in owning, operating and maintaining heavy equipment, and his extensive CV includes trail building in Banff National Park. He's been an active FOSS volunteer over the years and his expertise was especially appreciated for numerous erosion and bridge building projects. He has also certified many of FOSS' volunteers for UTV/ATV safety.

Herb is leading a trail brushing project this fall. Work started in mid-October, and Herb's first trail report is on page 2 of this newsletter.



There will be some short-term trail closures to facilitate safety for workers and trail users.

If you would like to help out with this project, please contact Herb Blamire: globalsafety@shaw.ca

To keep up-to-date on which trails have been brushed and where Herb and his volunteers will be working next, follow 'FOSS-Kelowna' on Facebook.



FOSS volunteer Eric Chamberland assisted Herb— here he is transporting the brusher & tools up to the worksite. Eric is one of FOSS' 'authorized' UTV operators, having received training and certification from Herb.

October 21/ 2019

FOSS: Trails' Maintenance Report—Week of Oct. 14-21 (Herb Blamire, Trail Co-ordinator)

We had a good first week; weather was very cooperative and FOSS volunteer Eric Chamberland was a great help.

Trails brushed:

- Lost Lake Trail from Trailhead to Fireweed
- Salamander, Lost Lake Trail to Fairlane.
- Fireweed, Lost Lake Trail to Race Classic
- Lower Bench from Lost Lake Trail to Bench Trail
- Earring Trail from Upper Bench to Hillbilly (Met AAT member for Earring at Big Drop and they were delighted that we were helping to keep the trail in good shape.)

We drove Race Classic back to Lost Lake Trail to confirm that the trail was open and re-installed the sign at Spring Bypass and Lost Lake Trail.

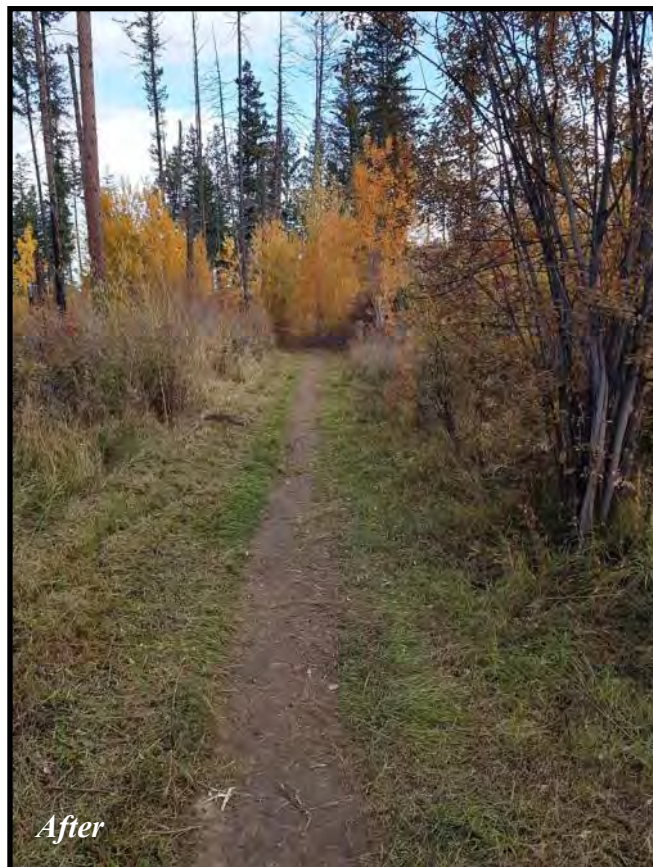
A good first week!

(More photos are posted on the FOSS Facebook page)

Lost Lake Trail above Spring By-Pass Trail



Lower Bench Trail



What's been happening on the South Slopes?

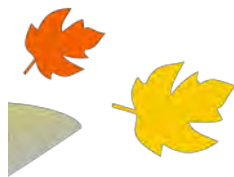
Some of the events that have taken place over the past six weeks are:

- ◇ BC 55+ Senior Games—Mountain Biking Events (Myra-Bellevue Provincial Park)
- ◇ MTBco sponsored 'Cranksgiving Funduro' Mountain Biking Event (MBPP)



(Photos printed with permission of MTBco)

- ◇ P.A.C.E. Fitness and Sport held their 7th annual 'Wandering Moose' trail running event, with close to 300 racers from all over Canada and the USA.



(Photos printed with permission of P.A.C.E. Sport & Fitness)

Update: Wildfire Fuel Harvesting, SE Kelowna

Members of the FOSS Board were among those who attended the Open House on October 9th at Gallagher's Canyon, which included presentations as follows (Andrew Hunsberger, Urban Forestry Supervisor, City of Kelowna, hosted the meeting). Preamble from Andrew:

The project is funded by the Forest Enhancement Society of BC (FESBC - <https://www.fesbc.ca>) and was led by Julius Huhs, a professional forester with the Okanagan Shuswap Natural Resources District - MFLNRD. Julius has turned the reins over to Ian Petersen, also a professional forester with the province. The City of Kelowna is pleased that this project continues to move forward as this project speaks to one of the recommendations in our Community Wildfire Protection Plan.

Topic	Presenter
Summary of the work completed to date. Introduce Ian Peterson as the new Project Manager.	Julius Huhs, RPF MFLNRD (Ministry of Forest)
Review the next phase of the project.	John Davies, RPF Davies Wildfire
Discuss prescribed grazing utilizing cattle.	Rob Dinwoodie Range Officer Okanagan Shuswap Natural Resource District

Fuel harvesting for the winter 2020 project encompasses the former SEKID Utility Property above Field Road, the immediately-adjacent Crown Lots, AND the southeastern flank of Myra-Bellevue Provincial Park. FOSS is attempting to dialogue with BC Parks' staff regarding post-project restoration of the MBPP trails that will be impacted.

Work will begin once the ground is thoroughly frozen. FOSS will update you as to scheduling as the information becomes available. This project will result in trail closures in the areas being harvested – please refer to the maps at the end of this article.

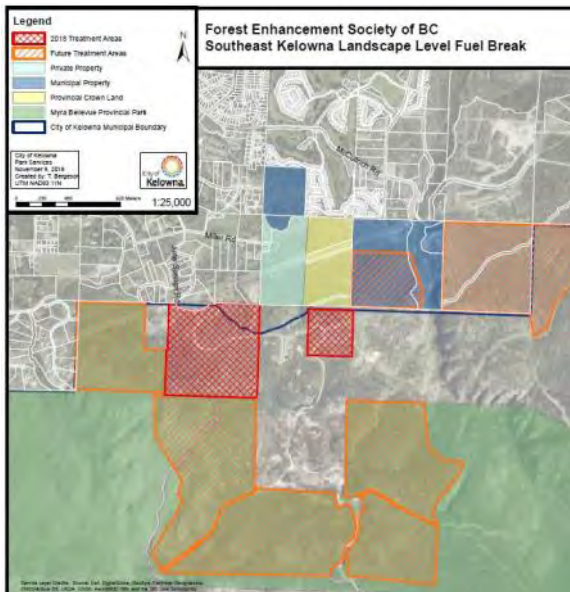
The 'targeted grazing' concept was reviewed, followed by audience questions/comments regarding the many pros and cons. Mr. Dinwoodie informed those in attendance that plans for the Targeted Grazing Project are underway. More details, such as suggested locations/types of fencing and gates, number of cattle, etc., will be forwarded to FOSS members as this discussion moves forward.

FOSS will continue to pursue our goal of having the Utility Property preserved as 'park', providing the link from the Mission Creek Greenway and KLO Creek Regional Park, to Myra-Bellevue Provincial Park. FOSS holds the Trail Maintenance Agreement for the area, formerly established with SEKID, now with the City of Kelowna.

Why FOSS cares - what makes this property very unique and special:

- It is the missing link in the continuous, vast trail system on the South Slopes of Kelowna, linking the Mission Creek Greenway to Myra-Bellevue Provincial Park, the KVR, Little White Mountain and beyond;
- It contains exceptional features not found elsewhere in the region: the view from the edge of spectacular KLO Creek Canyon and the historic irrigation flume;
- It is immediately adjacent to thousands of residents and frequented by many more who drive to the area and park at the end of Field Road (it accommodates horse trailers and larger vehicles); it can also be accessed from June Springs Road;
- There are kilometers of existing, well-defined, trails, from many, many years of recreational activity;
- Daily users include dog-walkers, hikers, runners, cyclists, horseback riders – and winter hiking, riding and snowshoeing;
- The intricate trail system offers an unparalleled variation of 'loops' (short, long, level, steep) to suit the very active or the elderly and small children, and the time you may have available for your 'outing'

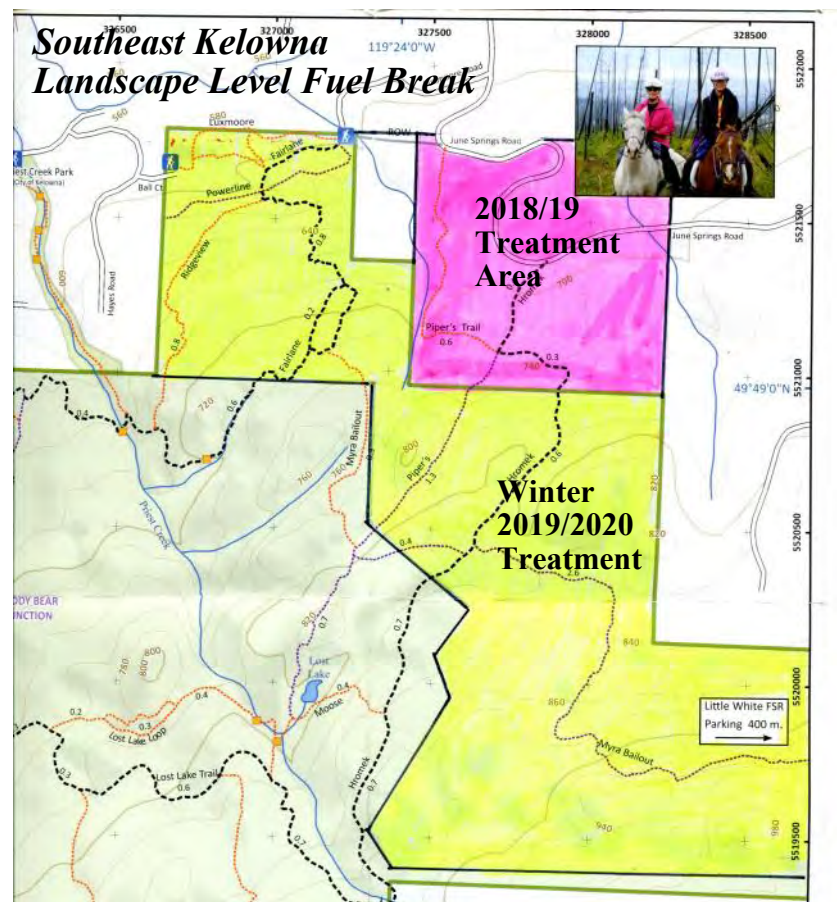
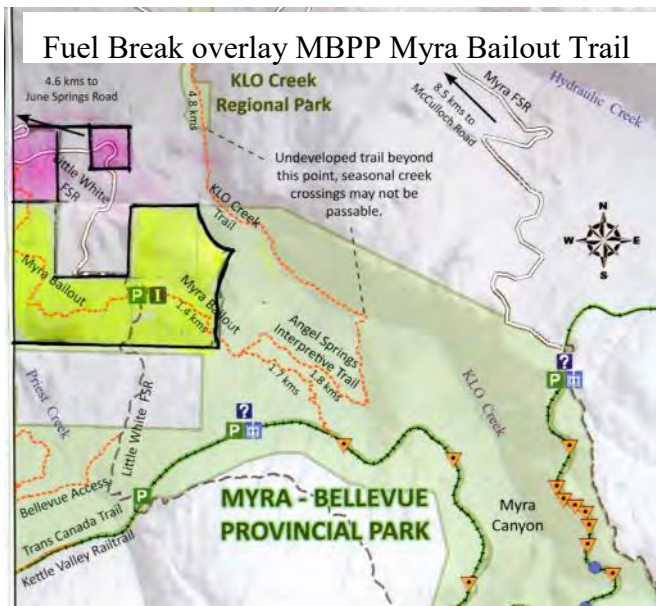
Recently, FOSS contracted with *McIntosh Trailworks* to GPS the existing trails located on the utility property and the Crown lands adjacent to it and to Myra-Bellevue Provincial Park. This data will be shared with the land managers involved in the Wildfire Fuel Mitigation Project (City of Kelowna, Regional District of Central Okanagan, Ministry of Forests Lands & Natural Resource Operations and Ministry of Environment (BC Parks)).



Please note—the map to the left was provided to FOSS by Andrew Hunsberger/City of Kelowna and was originally published in FOSS' April 2019 newsletter:

- Fuel reduction/logging in red hashed area was completed spring of 2019
- Fuel reduction/logging in orange hashed area is scheduled to be undertaken winter 2019/2020. This project includes areas in Myra-Bellevue Provincial Park and involves:
 - ♦ Trails in the Luxmoore area including sections of Fairlane Trail & Myra Bailout
 - ♦ Section of Piper's Trail
 - ♦ Most of Myra Bailout Trail, east and west of Little White FSR

The two maps below are 'conceptual' maps designed by FOSS, overlaying the "Treatment Area" map (above & to the left) provided by the City of Kelowna on to FOSS' Myra-Bellevue Provincial Park Trail Map.



FOSS AGM—Information will be sent to FOSS members in early December. The AGM will likely be scheduled in early February as the Mission Creek Regional Park Environmental Education Centre is not available in early January.

Regional District Information Session for Prospective Parks VIP's

If you like being outdoors, regularly visit Regional Parks and enjoy people, the Regional District of Central Okanagan would like to hear from you!

This month the Parks Services department is holding an Information Session for anyone interested in learning about or applying to join the *Volunteers in Parks* program.

The session goes Sunday, October 27th in the basement of the [Environmental Education Centre for the Okanagan](#) located in [Mission Creek Regional Park](#), Springfield and Durnin Roads. It begins at 1:30 pm with a 45 minute presentation, followed by a question and answer period. Participants are asked to enter the EECO through the downstairs backdoor.

The *Volunteers in Parks* program encourages community involvement in the Central Okanagan's extensive Regional Park system. The wide-range of volunteer opportunities is perfect for those people who like to get out and explore regional parks, are handy and creative and like to meet other like-minded interesting people.

There are also opportunities for families to get involved and for service organizations looking for hands-on projects that benefit the community.

Successful applicants will receive training, identification and other materials to help their volunteer experience.

You can learn more about the *Volunteers in Parks* Information Session and program by visiting www.rdco.com/parksVIP.

So far in 2019, Parks VIP's have contributed more than 2,100 hours of service to enhance the visitor experience in our 30 Regional Parks.

Contact:

Bruce Smith

Communications & Intergovernmental Affairs Officer | Corporate Services
Regional District of Central Okanagan
250-469-6339 | bruce.smith@rdco.com
Connect with us | rdco.com

**Autumn on the South Slopes
View from 'Connector' Trail**

