

Friends of the South Slopes

July 2019



Box 28011 RPO East Kelowna, Kelowna BC V1W 4A6

<http://www.foss-kelowna.org>

info@foss-kelowna.org

FOSS Lobbying for Adding South Slopes Parkland

FOSS is continuing to pursue the rezoning of the former S.E.K.I.D. Utility Property as 'park', and from FOSS' perspective, as an extension of KLO Creek Regional Park. This is a priority for this natural and historic property. We will also be making a formal application to the Provincial Government for a C57 for the adjoining Crown Lots (A C57 would allow for management of the trails therein.), anticipating that one day this area too will become part of the 'park'. The Utility Property and Crown Lots are seen by FOSS as crucial to the overall connectivity of the vast trail system on the South Slopes of Kelowna – the 'missing link' between the Mission Creek Greenway and Myra-Bellevue Provincial park – and beyond.

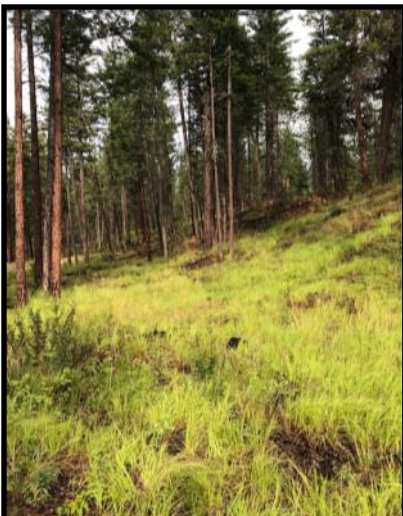
Over the past year, FOSS' KLO Creek Myra Recreation Area Committee (KMRA) has presented and promoted its vision to many of the decision makers at the City of Kelowna (including Mayor Basran and Councillor Gail Given), Regional District of the Central Okanagan, Ministry of Forests, Lands & Natural Resource Operation & Rural Development (including Recreation Sites & Trails BC) and BC Parks.

Recently FOSS was notified of a proposed 'Targeted Grazing Pilot Project' for the wildfire mitigation of the fine ground fuel remaining following the tree harvesting that has already taken place in this area, and that will continue during the winter of 2020—adjacent to and between June Springs Rd. & Field Rd. As a FOSS member, you will have already been

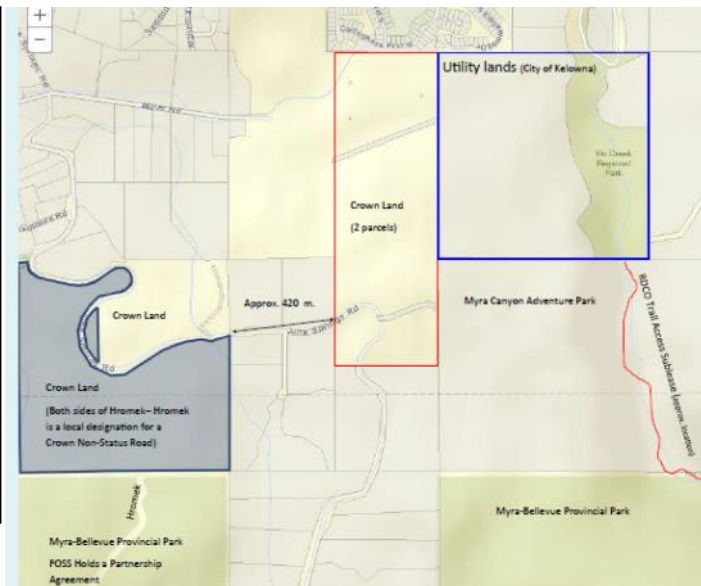
informed in detail of this proposal in an email dated July 20, 2019. This information is also posted on FOSS' Facebook page (FOSS-Kelowna) and on FOSS' website:

www.foss-kelowna.org

On the left is a map identifying the locations of the KLO Creek Regional Park, the Utility property, Crown lots and Myra-Bellevue Provincial Park ('tags' added by FOSS).



July, 2019: Above Gallagher's Community—where wildfire mitigation took place a few years ago.



Central Okanagan Search & Rescue

The FOSS board is working with Central Okanagan Search and Rescue (COSAR) to improve safety on the South Slopes. One initiative is to develop a group of volunteers to assist in large searches. An example would be a missing child. In this situation COSAR might seek additional help. These volunteers are called **Convergent Volunteers**. FOSS Director Milt Stevenson is networking with COSAR on this initiative. If you are interested in becoming a convergent volunteer, please contact Milt at: miltstevenson@gmail.com

Central Okanagan Sports Hall of Fame—2019 inductee

This fall, FOSS Vice President Daphne Richard will be inducted into the Central Okanagan Sports Hall of Fame under the 'Builder' category. Daphne is being recognized for her long involvement in the equine sport of Endurance. She held many positions on local, provincial and national equine boards and competed with her horse 'Teddy' at high levels of competition, including the 2003 Pan American Games and the 2005 World Championships in Dubai.

Congratulations Daphne!! Thank you for a lifetime commitment to the promotion of Endurance Riding, and of course for your long involvement with the Friends of the South Slopes Society.



THANK YOU TO RENE UNSER and her team from P.A.C.E. Sports Fitness. Their 2019 Wildhorse Traverse Charity Run raised a total of \$11,830.00. P.A.C.E. donated \$4,294 to FOSS and the balance was donated to Canadian Mental Health.

FOSS is extremely grateful to P.A.C.E. for its ongoing support. Rene is also a committed 'adopter' through FOSS' Adopt a Trail Program. Thank you also to the trail runners who competed in the Wildhorse Traverse Charity Run --- and who made this donation possible.

The FOSS Board of Directors has allocated these funds to a trail brushing project. Funds will be used on Wild Horse Canyon Trail in Okanagan Mtn. Provincial Park and on trails in Myra-Bellevue Provincial Park (See page 6 for your opportunity to provide input for this project).

Birds of Prey Exhibit—The Kelowna Museums Society

Curatorial staff have been busy putting the final touches on the newly designed permanent gallery. It's been an exciting few years of researching, writing, collecting, designing and installing.

Redeveloped exhibitions focus on Kelowna's natural and human history, from how the valley was formed (exploding volcanoes!) to how the lake and landscape lured newcomers to the valley (development boomed!).

Sylx/Okanagan culture is highlighted throughout, thanks to the generous support of the Museum's partners at the Sncəwips Heritage Museum.

Come and discover why the Okanagan landscape has had, and continues to have, a profound influence on life in Kelowna!

Recreation Sites and Trails BC (RSTBC) e-Bike Policy

On May 3, 2019, the Province issued a Press Release announcing its policy for managing e-bikes on legally established Recreation Trails. Please note that this policy applies to trails managed by *Recreation Sites & Trails BC* (Ministry of Forests, Lands and Natural Resource Operations and Rural Development) and does NOT apply **to trails managed by BC Provincial Parks (like the trails in Myra-Bellevue)**. The full context of the new policy is available on-line at the address at the bottom of the Press Release.

The Government's Press Release states:

Given the increasing popularity of electric bikes, a new policy has been developed for the safe, appropriate use of electric bikes on designated trails managed by Recreation Sites and Trails BC.

Electric bikes are a class of transportation/recreational bicycle that use an electric motor to either assist with propulsion or fully propel the rider. Users range from those looking to access more difficult and elevated trails, to people with disabilities who may not otherwise be able to access recreational trails.

Recreation Sites and Trails BC manages approximately 600 trails on provincial public land in B.C. Unless otherwise restricted, electric bike use on recreation trails is a permitted activity. Any decision by a district recreation officer to restrict or prohibit a class of electric bike will be based on considerations of safety, environmental impact and user experience, and will normally result from an engagement process with interested stakeholders.

Recreation Sites and Trails BC will evaluate and review implementation of the policy in collaboration with stakeholders and user groups, and make adjustments as necessary.

The policy only applies to established trails managed by Recreation Sites and Trails BC and does not apply to trails managed by BC Parks or vacant provincial public land, local governments or trails on private land. Electric bikes may be still restricted outside of this policy under regulations or local bylaws.

The policy is available online at: <https://www2.gov.bc.ca/gov/content/sports-culture/recreation/camping-hiking/sites-trails/program/policies-strategies>

With the growing popularity of e-bikes, many jurisdictions are grappling with how to classify and regulate their use. There is a full range of classifications of e-bike's— they can range from e-bikes that are 'Pedal Assist' (you're not pedaling, you're not moving! It requires pedalling input from the user to engage the motor), to Motor Assisted Cycle (MAC) with a throttle/accelerator (allows the user to engage the electric motor whether they are pedaling or not) to a Motor Vehicle classification (depending on the maximum power output the electric motor can produce).

Even e-bikes get flat tires! (Okanagan Rail Trail, May 2019)



Practicing Patience!

One lesson many volunteer/non-profits learn is that when they dream big ... it can sometimes take a LONG time to realize their vision. Case in point, the Province's 2018 acquisition of the 40 acre property known as 'Myra Wetlands' was result of twelve years of lobbying by FOSS.

Another example of this is the success of the **Mountain Bikers of the Central Okanagan** to have the Gillard mountain biking area approved as a Section 57 under the Forest and Range Practices Act (The Ministry of Forests, Lands, Natural Resource Operations and Rural Development). This designation permits MTBco to develop and maintain the trails as authorized under their C57 agreement.



And in June MTBco had another exciting announcement to make: They received Section 56 approval for the Gillard Trail network.

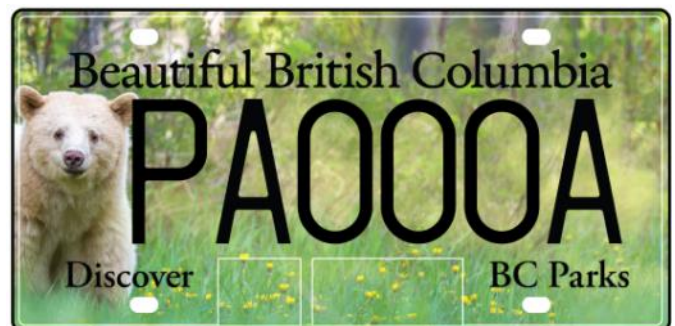
This means that the **Gillard Recreation Trails** are an official recreation site recognized by the province of British Columbia. This gives Gillard protection from industry and residential development. These trails are now established as a valued asset to our community and will be enjoyed for generations. **Congratulations, MTBco!!!**

Are you noticing how many vehicles are sporting the special BC license plates: "Discover BC Parks"?

We are! There are three different plate designs. They are available when you insure your vehicle, at an initial cost of \$50 and an annual renewal fee of \$40.

Net proceeds from the sale and renewals of BC Parks plates are re-invested back into Provincial Parks through the **Parks Enhancement Fund**. Criteria for application for PEF include:

- Projects should engage the local BC Parks community. (**FOSS has received PEF for past projects including trail brushing and erosion mitigation**).
- Priority will be given to initiatives with a volunteer component (includes activities, supplies, training and recognition).
- Healthy living & physical activity in BC Parks.
- Conservation in BC Parks (e.g., support for Ecological Reserve Wardens, nature education, invasive species control, restoration, science/ research, etc.).
- Attracting new and current visitors to BC Parks (e.g., learn to camp and learn to fish initiatives, youth events, multi-cultural events, accessibility projects, events, celebrations, etc.).
- Leveraging other financial contributions, such as sponsorships.



Short & Sweet!! Simple trail etiquette when you're on the trail

All Trail users...

TALK TO EACH OTHER!!!

Dog owners...

- "Stick & Flick" doggie doo-doo off the trail if you aren't packing in/ packing out
- Have dogs on leash or under control. A horse may perceive a loose or running dog as a threat.
- Do not let your dog bark or lunge at a horse.
- Chasing wildlife is an offence!!

Cyclists...

- yield to uphill cyclists
- Announce yourselves to equestrians, hikers & other cyclists. Tell them which side you are going to pass on

Horse Back Riders...

- Walk your horse past a dog. If the dog appears to be agitated, wait until the owner has it under control before passing.

Hikers...

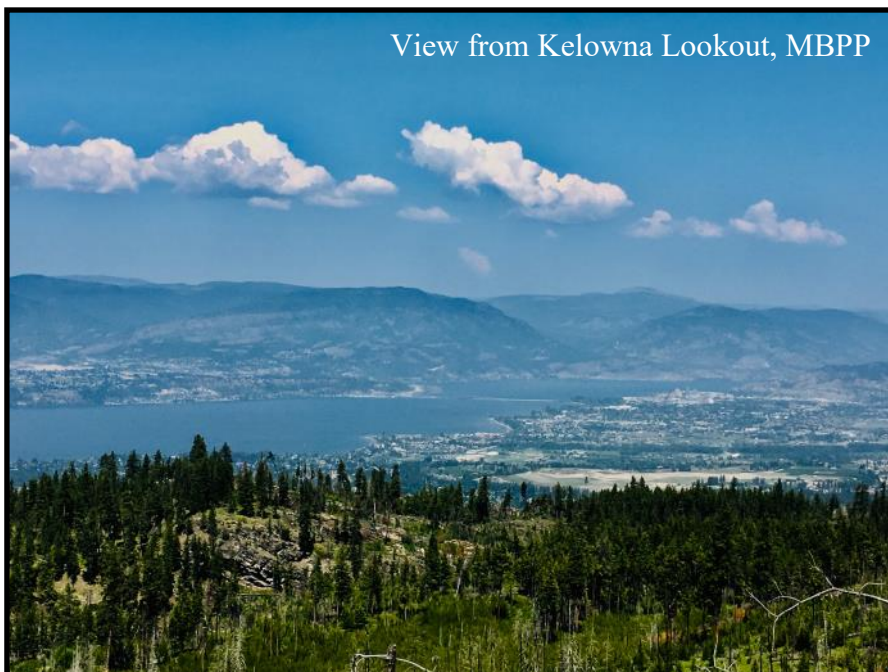
- Give a verbal warning when approaching a horse from behind; if approaching from the front, stay where the horse can see you and hear you

BC Parks recently posted this notice on its website:

Thieves regularly target vehicles in the Myra and Ruth Station parking lots. Please protect yourself by not leaving **any** valuables in your vehicle. Please report any suspicious activity to the RCMP.

Unstable road surface on the Kettle Valley Railway

Due to slope failure, a section of road surface on the Kettle Valley Railway (KVR) between the Ruth Station Parking lot and the Bellevue Trestle is **unstable (use at your own risk)**, avoid use when it is raining or water is pooling on the surface. Check [Recreation Sites & Trails](#) for more information.



View from Kelowna Lookout, MBPP

MULTIPLE USE TRAIL GUIDELINES

TRAIL COURTESY

BICYCLISTS

Ride on open trails only.
Leave no trace.
Control your bicycle.
Always yield trail.
Never scare animals.
Plan ahead.

EQUESTRIANS

Control your horse.
Avoid cross-country riding.

HIKERS

Yield trail to equestrians.
Allow equestrians and bicyclists to pass.
Don't cut switchbacks.

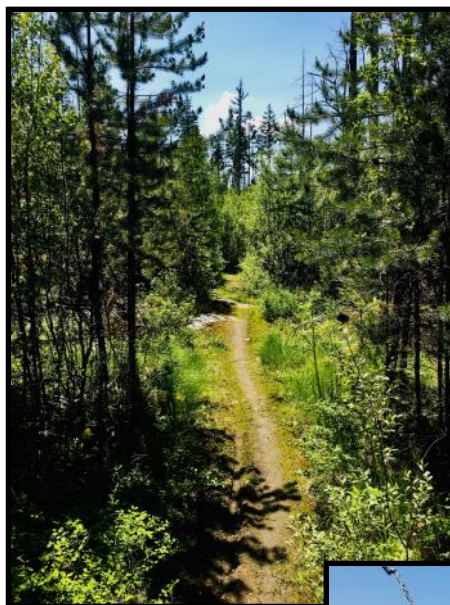
ALL USERS

For Your Safety Please:
Observe Rules And Regulations
Stay On Designated Trails
Be Alert And Courteous
Avoid Muddy Areas

Central Okanagan Outdoors Club—Trail Maintenance Day



Volunteers brushing upper Lookout Trail



Much improved!!!

Photo Credits:
Marshall Moleschi



A welcome break
at Kelowna Lookout

Summer/Fall Brushing Project

FOSS has allocated some funds for 2019 brushing/trail maintenance. This wet spring/early summer has virtually 'hidden' some of our trails it seems! If you know a trail in Myra-Bellevue Provincial Park that could use some brushing please let us know the exact location and send us a photo. The Board will review and prioritize and undertake a trail brushing project, hiring a contractor and also working with our Adopt a Trail sponsors and volunteers to coordinate this work.

Please send your ideas to: info@foss-kelowna.org

With the subject: **Trail Brushing Ideas**

Myra Canyon Adventure Park Changes Hands

The Von Andrian family, who are long-time FOSS supporters and Adopt a Trail Sponsors, recently sold their Myra Canyon Adventure Park. The good news is that the new owner, Greg, is not only a 'local', but he will continue with the sublease agreement for the trail along KLO creek. This allows the public to seamlessly travel KLO Creek Trail between KLO Creek Regional Park and Angel Springs Trail in Myra-Bellevue Provincial Park.

The Von Andrian's will continue to operate Myra Canyon Ranch on Little White Road.