

Friends of the South Slopes

November 2018



Kelowna Lookout, Myra-Bellevue Provincial Park (Photo Credit: JP Squire)

Box 28011 RPO East Kelowna, Kelowna BC V1W 4A6

<http://www.foss-kelowna.org>

info@foss-kelowna.org

Improvements Made to Little White Forest Service Road

Recently the government of BC completed road improvements to Little White Forest Service Road from the end of June Springs Road to the KVR/Trans Canada Trail.

Hopefully this will help to mitigate road washouts during next year's spring run-off. Little White FSR provides an important access route to the KVR as well as access to numerous entry points to Myra-Bellevue: Vapour Trail (shuttle), Angel Springs Trail, Bellevue Access Trail and the parking lot at the west end of the KVR/Myra Canyon Trestles.

Following the 2003 Okanagan Mountain Provincial Park forest fire, spring freshets have caused flooding and presented many problems and challenges to the roads, trails, bridges, culverts and infrastructure on the South Slopes.



FOSS' AGM

Thursday, January 10, 2019

More information in the December newsletter

It's a messy discussion to have, but.....

Myra-Bellevue Provincial Park, KLO Creek Trail and other popular dog-walking areas on Kelowna's South Slopes are the perfect places to take Fido or Fifi. The majority of dog owners are very responsible and clean up after their pooches or else they use the 'stick & flick' method to ensure that their dog's doo-doo is not left behind on the trail for other hikers or cyclists to



accidentally tread on. However, come winter, when the trails are deep in snow, some doggie owners neglect to pick up after their pets. This makes for a real mess in the spring when the snow melts and those piles remain. Please pack-in/pack out or stick & flick. BC Parks does not provide garbage receptacles at the Stewart Rd. East Trailhead, so please plan ahead and have a strategy in place. Dogs tend to poop as soon as they are out of the car—please clean-up if Fido poops in the parking lot.

Now might be a good time to re-print the information that BC Parks' supervisor Ryan Elphick posted in 2015 —here it is:

I would like to remind Park visitors that the opportunity to enjoy off leash areas requires owners to be responsible for their pets. These responsibilities include:

- *Insuring your pet is under control at all times. This means your pet is within arm's reach of you and will return when called in all circumstances.*
- *Picking up after your pet. At the very least "stick and flick" your pets waste off the trail.*
- *Not allowing your pets to harass wildlife. It is an offence under the Wildlife Act to allow your pet to chase and or harass wildlife.*
- *Not allowing your pet to harass other Park visitors. The Park is used by many user groups and if your pet is not well behaved around horses, cyclists, people or other dogs you should not allow your dog to be off leash in the Park.*

Please help to ensure the Park continues to allow off leash recreating with our four legged friends by being a responsible pet owner.

Mission Creek Restoration Initiative

FOSS recognizes and supports the Mission Creek Restoration Initiative. The following information was received from the Friends of Mission Creek: The MCRI is a collaborative project working toward benefits for both residents and the environment. With a wide range of partners from First Nation and local government to provincial agencies, business and non-profit groups, the MCRI came together with a demonstration project to set-back about 500 meters of Mission Creek dike near the Mission Sports Fields. The Central Okanagan Land Trust successfully applied for funds under the Recreation Fisheries Conservation Partnership Program for more than \$400,000 over the past 4 years. The result is an expanded flood plain, improved riparian habitat, improved fish habitat and a new way to engage visitors who enjoy the Mission Creek Greenway.

It's been a busy year for our friends at *Mountain Bikers of the Central Okanagan*

Bike Station: Thanks to the financial support of **Cyclepath Cyle & Snow**, who purchased and also paid for its installation, a bike work station was installed by the kiosk at the Stewart Rd. East parking lot in Myra-Bellevue. Cyclepath's owner, Garry Norton, said that this was their way of "giving back" to the Crawford cycling community, since Cyclepath has hosted hundreds of group rides here over the past 20+ years. MTBco director (and former FOSS director) Andrew McIntosh installed the work stand.

Gillard Recreation Site!

After ten years of tireless effort, MTBco has signed a Section 56 agreement with the Ministry of Forests Lands & Natural Resources/ Recreation Sites & Trails. The Gillard Trails will become an official Provincial Recreation Site next spring. This designation sanctions the mountain bike trail system known as the "Gillard Trails" and it permits MTBco to undertake authorized maintenance and development projects. MTBco will now work towards improving and maintaining this epic trail system. Earlier this month, the lower Gillard Parking lot was constructed with funding from *Recreation Sites & Trails BC*. A kiosk, washrooms and signage will be installed in the spring of 2019.

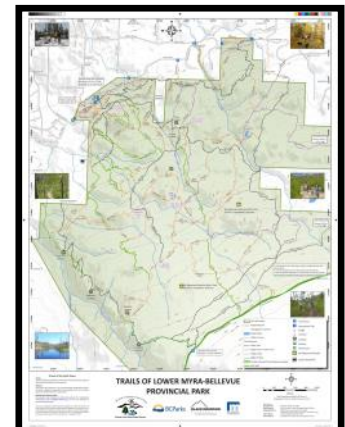


**Thank you to
Black Dragon
Paintball for
installing these
great signs on
Hromek Road.**



Looking for a 'Stocking Stuffer' for someone on your Christmas List? FOSS' Myra-Bellevue Provincial Park trail map is available at most local cycling stores, as well as Save-On Foods, Mosaic Books, Diamond H Tack, Tourism Kelowna and MEC (available on-line through MEC as well as at the store).

Profits from FOSS' trail map support trail improvement projects. The map is made of a sturdy tear & water resistant paper.



FOSS' Adopt a Trail Program (AAT) for clubs, families, groups or individuals

*We often (and rightfully so!) promote the amazing work done by our **Adopt-a-Trail sponsors**...businesses that support FOSS by adopting and maintaining a trail and by paying FOSS an annual sponsorship fee. The AAT Sponsorship Program commenced in 2012. However, FOSS' Adopt a Trail Program was actually started in 2007 as a way for FOSS members to 'adopt' a trail either as an individual, a family, a club or group or a neighbourhood. This component of the program is still running, but over the years the number of 'regular' adopters has dwindled. FOSS would like to change that! In the spring of 2019—watch for your opportunity to become an Adopt a Trail volunteer.*

What is F.O.S.S.' Adopt-A-Trail Program?

The Friends of the South Slopes Society's Adopt-A-Trail Program is a volunteer program providing opportunities to assist with the general care and maintenance of trails in Myra-Bellevue Provincial Park, Okanagan Mountain Provincial Park and City of Kelowna Parks on the South Slopes.

Who can adopt a trail?

Anyone with an interest in the trails is encouraged to help enhance the recreational experiences of hikers, bicyclists, and equestrians. **This includes individuals, organizations, businesses, clubs, service organizations, neighbourhoods, groups, and families.**

What can volunteers do?

Adopt-A-Trail volunteers can help in the general maintenance of the trail system. Maintenance can include keeping the trail surface (including bridges) free of rocks, sticks, litter and other debris and removing noxious invasive weeds. Volunteers can hand dig trail drainage and water bars to mitigate erosion from run-off. Blow down trees and branches can be removed with a handsaw. Use of chain saws or operation of motorized vehicles in the park is not permitted.

Additionally, volunteers can "observe, record and report" on any concerns such as vandalism, illegal activity, trail hazards or safety issues by contacting BC Parks staff in the Penticton office of the Ministry of the Environment or the City of Kelowna Parks Dept. (if it concerns a city park).

Why should you participate?

Adopting a trail provides an opportunity for you to be actively involved in improving the parks' trail system for all to enjoy, and to give something back to your community. You get to enjoy your time outdoors and have the personal satisfaction of knowing that you are making a difference.

How do you Adopt-A-Trail?

Do you have a favourite trail or a section of trail? Contact F.O.S.S. at: info@foss-kelowna.org and we will assist you in choosing a trail to adopt.

What are your responsibilities?

- * be a current member of FOSS
- * sign the F.O.S.S. waiver as well as the Adopt-A-Trail Program Application and Terms of Participation.
- * visit your adopted trail 2 or 3 times a year in order to do your maintenance
- * record your volunteer hours and forward the information to FOSS by Oct. 31 of each year (electronically: info@foss-kelowna.org or by mail, Box 28011 RPO East Kelowna, Kelowna BC V1W 4A6)

NOTE:

***Adopt-A-Trail volunteers are not authorized to use chainsaws or have motorized equipment on the trails

FOSS welcomes the newest members of its Adopt A Trail/Regular Program: Frank, Royal and Taylor who recently adopted Big Drops Trail in Myra-Bellevue Provincial Park. The Central Okanagan Naturalist's Club and the Central Okanagan Outdoors Club are two of FOSS' current participants in the program.