

# Friends of the South Slopes

## Summer 2015



Box 28011 RPO East Kelowna, Kelowna BC V1W 4A6

<http://www.foss-kelowna.org>

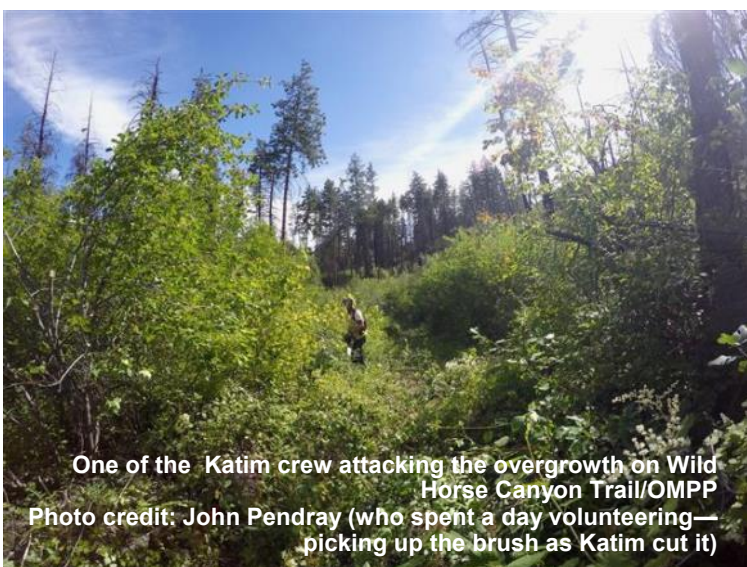
[info@foss-kelowna.org](mailto:info@foss-kelowna.org)

## Wild Horse Canyon Trail — - Open for Business!!

Anyone wanting to hike, cycle, run or ride the north end of the Wild Horse Canyon Trail in Okanagan Mtn. Provincial Park this spring (from Horse Creek to the Buchan Bay junction) would have been immensely challenged because of the intense overgrowth.

In June, Katim Enterprises, the contractor FOSS hired with its National Trails Coalition grant, spent four weeks brushing and clearing this section of the trail.

BC Parks staff cleared Wild Horse Canyon Trail from the South Parking lot (Naramata side of the park) to the Buchan Bay Junction. Starting in 2016, Wild Horse Canyon Trail will be cleared/maintained by the BC Parks' Facility Operator under a new contract for Okanagan Mountain Provincial Park.



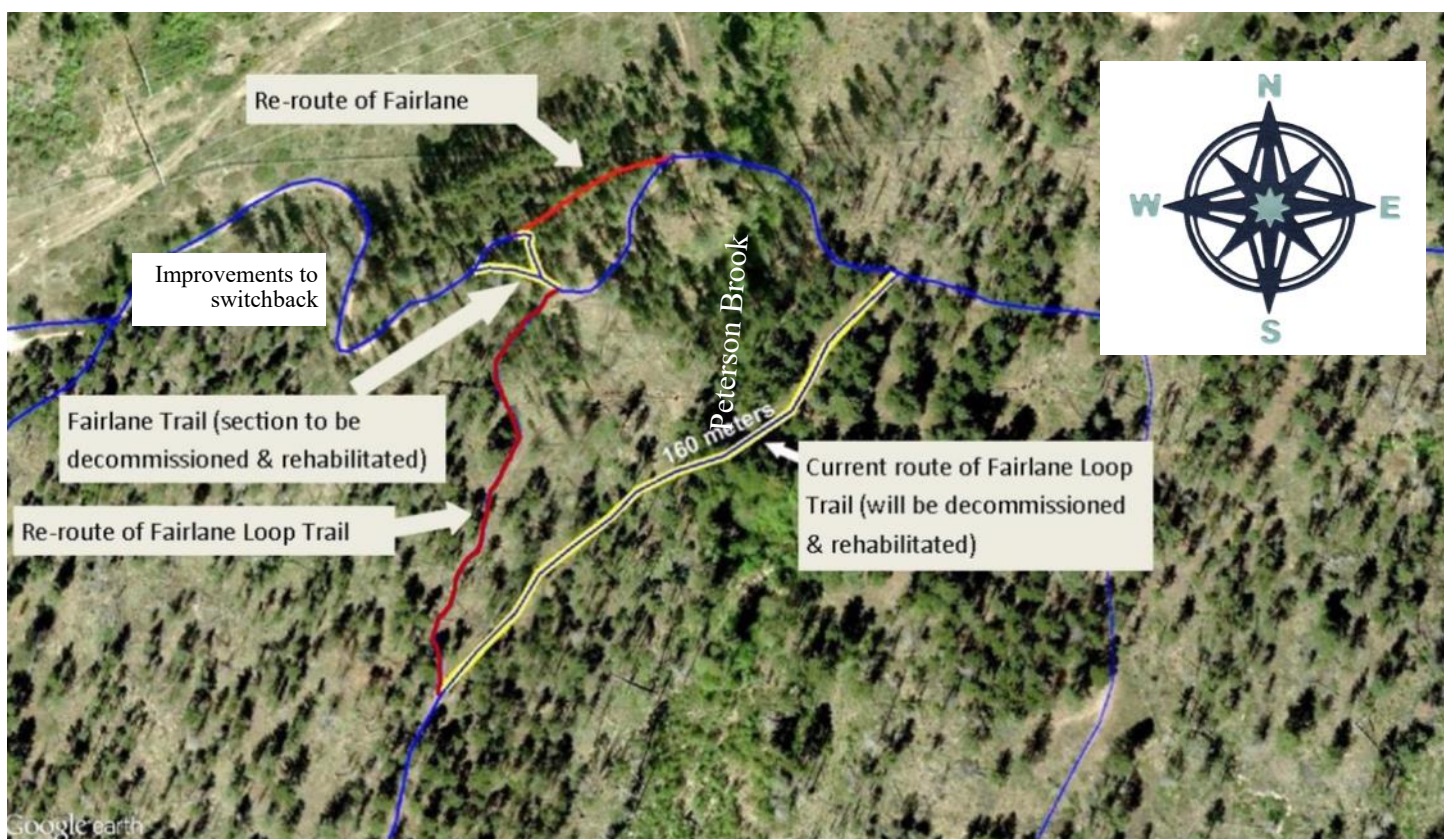


## Trail Improvement Project Approved

In June, FOSS presented a proposal to BC Parks Area Supervisor Ryan Elphick for two trail re-routes in Myra-Bellevue. After an on-site visit, Ryan approved this project.

**Fairlane Trail:** In FOSS' December 2013 newsletter, we wrote an article about the issues of trail erosion, specifically trail braiding and fall line trails. One of the photos that was used as an example was a section of Fairlane Trail west of Peterson Brook where Fairlane Trail heads towards the Power Line south of Harvard Rd. As the section of trail on the steep hillside got further eroded and more deeply rutted, trail users simply moved over and started new tracks. Since Fairlane Trail is one of the more highly used trails in Myra-Bellevue and the trail as it currently exists on the hillside is not repairable or sustainable, a new route will be constructed. The project is identified on the map below as "re-route of Fairlane". The old trail will be decommissioned and rehabilitated.

**Fairlane Loop Trail:** Currently the east end of Fairlane Loop Trail traverses a steep hillside and crosses Peterson Brook before its junction with Fairlane Trail. Recently most trail users have been avoiding this eroded, rutted slope and have made a new trail with their feet, hooves & tires that connects to Fairlane Trail west of Peterson Brook. Fairlane Loop Trail will be re-routed as indicated on this map.



Additionally, FOSS will make trail improvements to the switchback on Fairlane Trail that's located west of the re-route. We will make adjustments to the trail tread to enhance rolling contours and reverse grades as well as to move the apex of the corners to obtain a decreasing radius corner. This will make the trail fun for cyclists in both directions and will lessen the speed coming downhill to decrease braking which causes erosion. It will not affect how hikers, runners & equestrians use the trail.

As both Fairlane Trail and Fairlane Loop are part of FOSS' Adopt a Trail Sponsorship Program, the 'adopters' will be included in the planning and execution of this project. FOSS Director Andrew McIntosh will be the project manager.





## Update on FOSS' NTC Grant

If you frequent the Stewart Rd. East Trailhead in Myra-Bellevue Provincial Park, you'll have seen the sign announcing FOSS' trail improvement project. The \$21,000 grant from the National Trails Coalition (funding through Canada's Economic Action Plan) was matched by FOSS. This made it possible for FOSS to hire Katim Enterprises Ltd. for 10-12 weeks of trail restoration work in Myra-Bellevue & Okanagan Mtn. Provincial Parks. After completing four weeks in OMPP, the two Katim crew members are now working in Myra-Bellevue. We hope that you will notice all the work they have done to brush back the overgrowth.

## “Matching Funding” for the NTC Grant Project

The Board of Directors is extremely pleased to announce that FOSS is committed to reaching its goal to match funding for our \$21,000 NTC grant — so we can fully leverage the grant to reach a budget of \$42,000 for the Myra-Bellevue/Okanagan Mtn. Provincial Park Trail Restoration Project.



A **HUGE** thank you goes out to the **Central Okanagan Foundation** that contributed \$10,000.00 to FOSS for this project. The COF has a long history of supporting FOSS, first with a post-fire grant in 2004 and the latest grant in 2013 was \$8,000.00 towards FOSS' purchase of a Tool Storage Unit and a UTV—both are helping to maximize the efforts of our volunteer's.

**BC Parks** is contributing \$2,500.00 to the NTC Project through a Park Enhancement Fund grant awarded to FOSS.

The **Okanagan Similkameen Parks Society** contributed \$1,000 to FOSS for the 2015 trail improvements in Okanagan Mtn. & Myra-Bellevue. This is the second time OSPS has shown its support for FOSS' projects. In 2013 they contributed \$1,680.00—matching both FOSS' and BC Parks' contribution to the erosion mitigation project on Deeper Creek and Boulder Trail in Okanagan Mtn. Provincial Park.



Bellevue Creek Canyon from the KVR



## ***Please!!! Follow the Rules***

In June, BC Parks' staff installed an "Area closed to unauthorized motor vehicles" sign on Crawford Trail south of the gravel pit. Unfortunately, it only took a few weeks until someone vandalized the sign.

There are a few folks out there who continue to ride their quads & dirt bikes in Myra-Bellevue — fifteen years after it became a Provincial Park with a non-motorized trail system. Volunteers, contractors & BC Parks staff that are authorized to be in the park in motorized vehicles will be able to show identification if asked.



## ***The Grouse with Attitude!***

A number of hikers & cyclists have encountered this little fellow on Outhouse Trail by Grassy Trail. Not only does it come right up to you if you stop on the trail but it gets quite aggressive when you try to leave! Picture two hikers running away from a 500 gram bird as it flies at them from behind.

Ken Wiklund posted an amusing video on FOSS' Facebook page of his encounter with this bird. Look for the June 5th post (FOSS-Kelowna)



## ***A Tribute to Al Bischoff***

Long time FOSS member Al Bischoff passed away on August 1st after a brief illness. Al was a FOSS director from 2010 to 2012, holding the position of President in 2011 & 2012. He continued his involvement with FOSS as a member of the KLO Creek Trail committee. Al was a tireless volunteer in our community and was active in the Rotary Club and the Parkinson's Seniors Centre where he often led hikes in Myra-Bellevue.

Our condolences to Al's wife Chris and their family.





## ***FOSS is Planning Ahead for 2017—Canada's 150th Birthday***



Canada 150 grant—July 28, 2015 funding announcement by Kelowna-Lake Country MP Ron Cannan

In late July, the FOSS board was notified that it's application for a Canada 150 grant was successful. This \$20,000 federal grant (Western Economic Diversification Canada WEDC) is for infrastructure upgrades. FOSS will be applying these funds to repair/replace bridges in Myra-Bellevue and to continue with its ongoing trail restoration projects. As with FOSS' 2015 National Trails Coalition grant, the Canada 150 grant requires matching funds to fully leverage the federal money. In the case of the Canada 150 grant, FOSS must provide WEDC with proof of paid invoices up to \$40,000 before the federal funding of \$20,000 is released. Looks like more fund raising is in store for FOSS in 2016!



### ***Central Okanagan Land Trust***

*Celebrating its 25th anniversary this year*

*The mission of the Central Okanagan Land Trust is:*

*To protect land for wildlife and parks so bio-diversity and natural features are preserved for future generations. C.O.L.T. accepts land or other material assets and purchases or holds land for the "preservation, conservation or fostering of nature or wildlife sanctuaries, parks or reserves" for future generations. Their board takes a pro-active approach to securing additional lands, particularly those that are sensitive as wildlife habitat including wetlands and riparian habitat, pocket grasslands and other environmentally sensitive landscapes that are fast disappearing in the Central Okanagan. Just a few of their projects include Lebanon Creek, Munson Pond and the Johns Property.*

You can learn more about C.O.L.T. at <http://coltrust.ca/>

To receive their newsletter, go to the "News" tab and sign up.

## **Let's Thank our Adopt a Trail Sponsors!**

### ***Platinum Level***

### ***Corporate Sponsors***



# Platinum Level Sponsors





## Gold Level Sponsors



## Silver Level Sponsors



Ben Smit,  
National Bank Financial



### **Adopt a Trail Sponsorship Plaque Presentation to Cabin Forestry**

FOSS director Ken Wiklund (right) presents Steve Milne, Cabin Forestry, with an appreciation plaque. Cabin Forestry is FOSS' newest Adopt a Trail Sponsor. They 'adopted' Boris Trail in Myra-Bellevue.

*"Like" FOSS on  
Facebook  
FOSS-Kelowna*



Fitness Instructor Dawn Balic's recent donation of \$510 was allocated to the NTC grant project. For the past three years, Dawn has donated proceeds from her Boot Camp program



Dawn Balic (left)  
FOSS Secretary Penny Gubbels (right)

**FOSS would like to thank South Kelowna property owner Brady Ingleton who kindly gave permission for FOSS' contractor, Katim Enterprises, to traverse his property in order to access trails in upper Myra-Bellevue. This saves time (for the contractor) and money (for FOSS)**



Piper's Trail near Lost Lake