



Signs for the Mission Creek Trails

Wood Stock Lumber Sales on Rutland Road donated a jag of cedar ends to the F.O.S.S. Joe Rich/Mission Creek Trails Committee. Volunteers Doug Black, Anne Mackay and Dale Truitt are routing and painting trail signs that will be erected next spring on the Mission Creek Trails.

These trails are located on Crown land on the South Slopes south of Mission Creek near the community of Joe Rich. They are part of a multi-use recreation area that is open to both motorized and non-motorized recreation. All trail users will benefit from a signed trail system.



Work Continues in Priest Creek Park

Led by F.O.S.S. Director Nick Fiorante, five volunteers constructed another section of Priest Creek Trail in an area of Priest Creek Park that was disturbed during the construction of the water line for the adjoining subdivision.

The City of Kelowna Parks Department is completing its plans for the three foot bridges that will be constructed as part of this project.



TELUS Dollars for Dollars Donation

TELUS recently contributed \$400 to F.O.S.S. through its Telus team member charitable giving program. TELUS encourages its team members and retirees to contribute to registered charitable organizations and they match those contributions dollar for dollar and donate them the following year. In 2006 TELUS employees and retirees designated \$200 to F.O.S.S., and that was matched by the company.

Recent Vandalism in MBPP

Throughout the summer and fall there have been a number of instances of vandalism in Myra-Bellevue Park including damage to fences, trail signs and the security gate at Stewart Rd. East.

On the night of Thursday September 13, 2007 the Stewart Road East trailhead was targeted. The pit toilet, concrete parking barriers and signs were 'tagged'. The most serious damage was done at the information kiosk. Cleanup and repairs were undertaken by BC Parks' staff.



Gun shot damage to a trail sign



Graffiti on the kiosk

F.O.S.S. AGM

The Board of Directors set Thursday January 10th 2008 as the date for the Annual General Meeting of the Friends of the South Slopes Society.

Upgrades at the Stewart Road East Trailhead

In October, BC Parks installed a second pit toilet at the Trailhead and graded the parking lot.

Your 2008 F.O.S.S. Membership renewal form and information about the AGM will be mailed to you in December. The 2008 F.O.S.S. membership form is also available on our website:

www.foss-kelowna.org



Crawford Lake

Hiking to the summit of Little White Mountain

On September 8, 2007, Members of the Penticton Outdoors Club hiked to Little White Mountain in Myra-Bellevue Provincial Park. They approached from the south, climbed the eastern flank of the mountain, followed the top ridge to the summit before dropping down, crossing the saddle and climbing to Crawford Lake. Their return route was along the south face of Little White.

Club President Brad Houston has been climbing Little White for forty years, and the club has been hiking it for thirty years. More information on the Penticton Outdoors Club and more photos of their Little White hike can be found on their website: www.pentictonoutdoorsclub.ca

At an elevation of 2,165 meters, the view from the summit of Little White is arguably one of the best in the Okanagan. It's sub alpine habitat and stunning vistas

are well worth the long hike. There are a number of routes to access the trails of Little White Mtn. (see map on next page)

- ***Little White Trail.*** This trail starts at the small parking area at the end of Little White Forest Service Road. This road is not maintained and is only suitable for 4 wheel drive vehicles.
- ***Crawford Trail***
- ***Okanagan Highlands Trail***— starting in the east at Canyon Lakes or from the west at Big Meadow Lake
- ***Snowmobile trail*** south of Little White (not on map)



This is a 'backcountry' — the trails are generally not well marked and it is advised that you travel with someone who is familiar with the area.

Little White is part of Myra-Bellevue Provincial Park and motorized recreation is not permitted except for snowmobiles which are allowed when snow depths permit.

If you haven't been to Little White—consider putting it on your 'to do' list for 2008. But remember, the snow stays late on the mountain, and the best time to hike is late summer. While the 'tread lightly' mantra is always important in the back country, it is especially important on Little White where off-trail travel can impact the ecology for many years. There are no park facilities—so take out all garbage and pack plenty of food and water. Be prepared for severe weather—temperatures and weather conditions can change suddenly.

Little White Mountain Worth Seeing Worth Preserving

**Myra Canyon
Alternate Route**

Myra-Bellevue Provincial Park

Myra-Bellevue Provincial Park conserves and protects the sub-alpine meadows and rock escarpment of Little White Mountain. From its 2,165 metre summit, Little White offers a spectacular 360 degree view. The Crawford Trail begins near the northwestern boundary of Myra-Bellevue Park, and ascends for nearly 20 km. to Little White Mountain. The Okanagan Highlands Trail traverses the Little White section of the Park in an east/west direction. The trails in this area of the park are rough and not clearly marked. Use caution, stay on the trails, and avoid damage to vegetation.

Myra-Bellevue Provincial Park

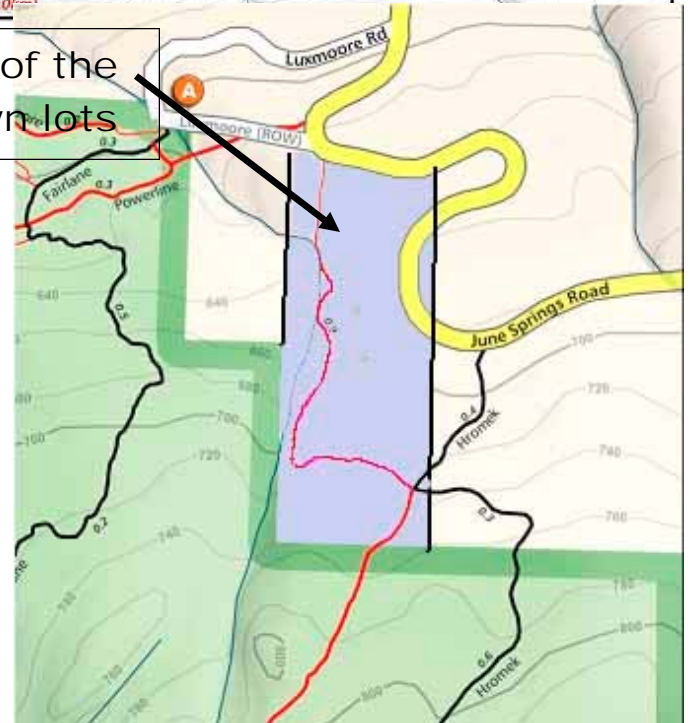
Little White Trails



Piper's Trail

Since the establishment of Myra-Bellevue Park in 2000, the F.O.S.S. Board has supported the addition of two critical pieces of Crown land that it believes should have been in the park. These Crown lots are located west of June Springs Road. (see map). The first step was reached this summer when the BC government Integrated Land Management Bureau registered a notation of interest on the portion of Piper's Trail that traverses the Crown lots. This has also been noted at the Okanagan Shuswap Land and Resource Implementation Committee.

Location of the
two Crown lots



2nd Edition of F.O.S.S.' Myra-Bellevue Provincial Park trail map

F.O.S.S.'s 2005 trail map project was very successful.

The Board is working on a 2nd printing which will be available in the new year.



**Photo Credit:
Mike Kittmer**

How to Contact your F.O.S.S. Directors:

Mailing Address: Box 28011 RPO East Kelowna, Kelowna BC, V1W 4A6
e-mail: info@foss-kelowna.org **Website:** foss-kelowna.org

